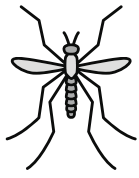
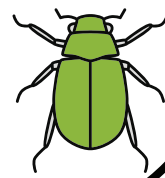


the



my

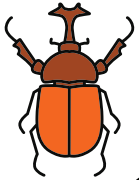


at

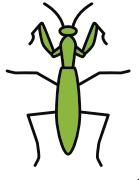
Education  
IOWA PBS

Education  
IOWA PBS

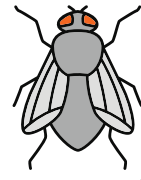
Education  
IOWA PBS



he



she



can

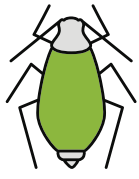
Education  
IOWA PBS

Education  
IOWA PBS

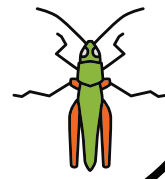
Education  
IOWA PBS



an



all

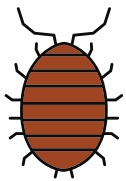


are

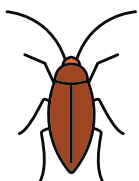
Education  
IOWA PBS

Education  
IOWA PBS

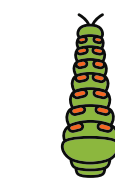
Education  
IOWA PBS



not



now



for

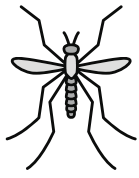
Education  
IOWA PBS

Education  
IOWA PBS

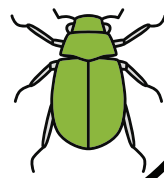
Education  
IOWA PBS



so



no

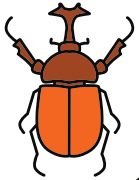


go

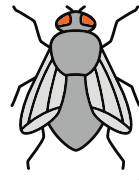
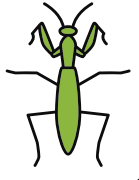
Education  
IOWA PBS

Education  
IOWA PBS

Education  
IOWA PBS



I like a



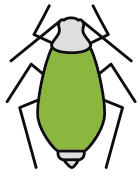
Education  
IOWA PBS

Education  
IOWA PBS

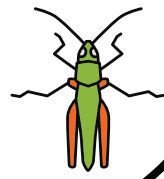
Education  
IOWA PBS



see



is

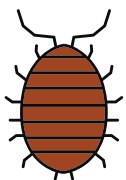


it

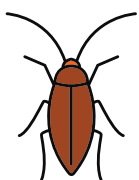
Education  
IOWA PBS

Education  
IOWA PBS

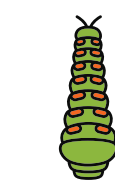
Education  
IOWA PBS



on



can

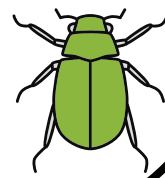
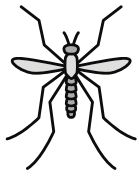
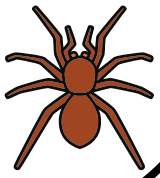


you

Education  
IOWA PBS

Education  
IOWA PBS

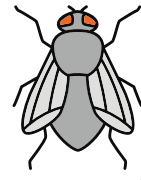
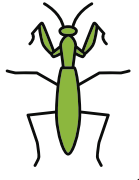
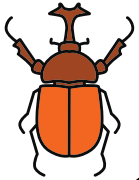
Education  
IOWA PBS



**Education**  
IOWA PBS

**Education**  
IOWA PBS

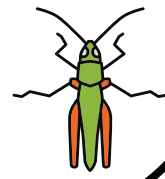
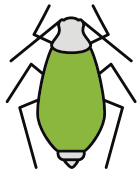
**Education**  
IOWA PBS



**Education**  
IOWA PBS

**Education**  
IOWA PBS

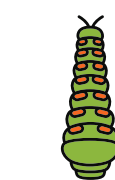
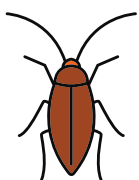
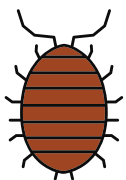
**Education**  
IOWA PBS



**Education**  
IOWA PBS

**Education**  
IOWA PBS

**Education**  
IOWA PBS



**Education**  
IOWA PBS

**Education**  
IOWA PBS

**Education**  
IOWA PBS